

PRODUCT INFORMATION PACKET

Model No: 5KH35LNB164
Catalog No: HG456
0.17 HP Explosion Proof Motor, 1 phase, 1800 RPM, 115 V, 48 Frame, EPNV
Explosion Proof NEMA Motors



Regal and Marathon are trademarks of Regal Beloit Corporation or one of its affiliated companies.
©2020 Regal Beloit Corporation, All Rights Reserved. MC017097E

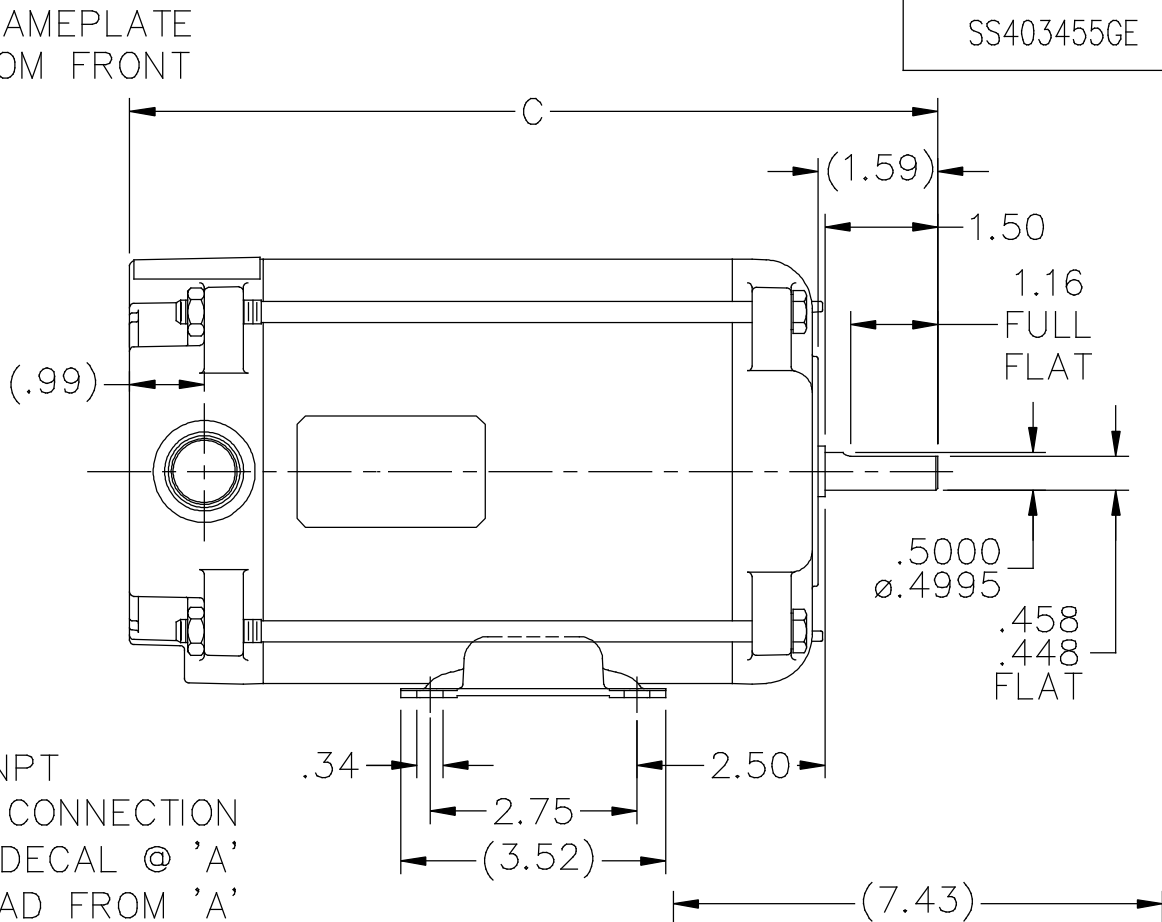
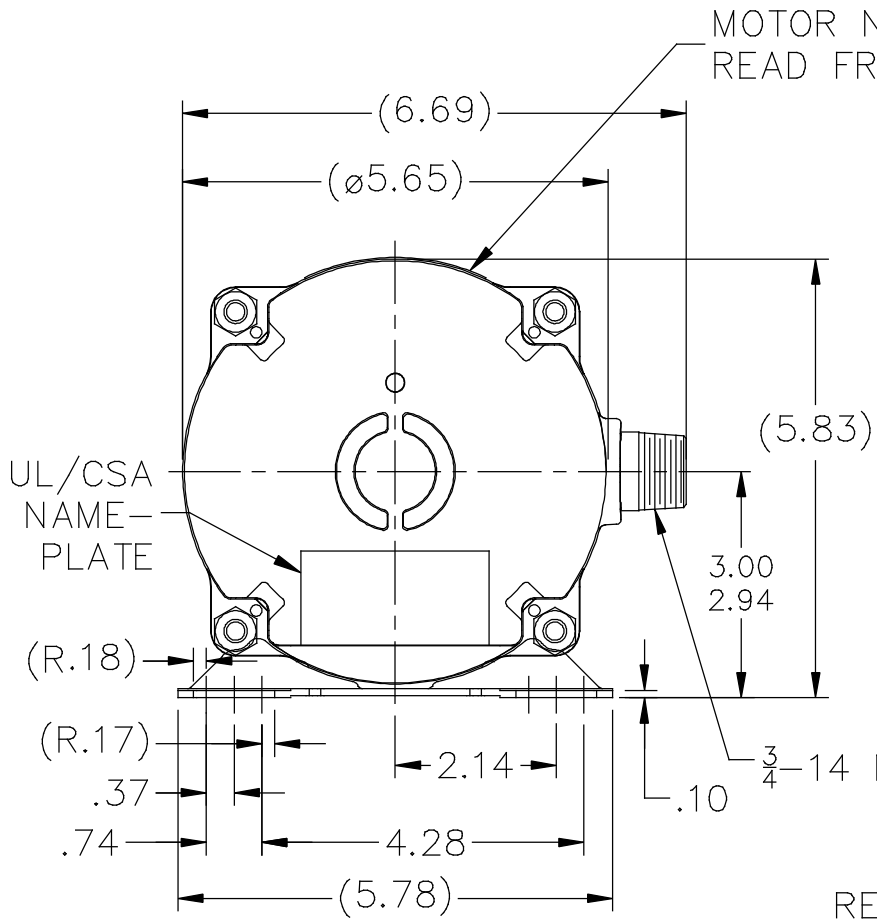
REGAL

Nameplate Specifications

Output HP	0.17 Hp	Output KW	0.13 kW
Frequency	60 Hz	Voltage	115 V
Current	3.3 A	Speed	1725 rpm
Service Factor	1	Phase	1
Efficiency	62 %	Power Factor	63
Duty	Continuous	Insulation Class	A
Design Code	NO DESIGN CODE	KVA Code	T
Frame	48	Enclosure	Explosion Proof Non Ventilated
Thermal Protection	Automatic	Ambient Temperature	40 °C
Drive End Bearing Size	6203	Opp Drive End Bearing Size	6203
UL	UL Listed And CSA Certified	CSA	Y
CE	N	IP Code	54
Hazardous Location	EXP PROOF CL I GR D CL II GR F&G T3B		

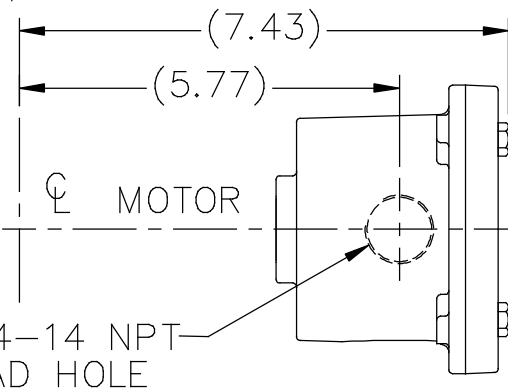
Technical Specifications

Electrical Type	Split Phase	Starting Method	Across The Line
Poles	4	Rotation	Selective Counterclockwise
Resistance Main	0 Ohms	Mounting	Rigid base
Motor Orientation	Horizontal	Drive End Bearing	Ball
Opp Drive End Bearing	Ball	Frame Material	Rolled Steel
Shaft Type	NEMA 48	Overall Length	10.31 in
Frame Length	5.80 in	Shaft Diameter	0.500 in
Shaft Extension	1.59 in	Assembly/Box Mounting	F1 ONLY
Connection Drawing	A-EE7116K-GE	Outline Drawing	A-SS403455GE-580




LEAD DESCRIPTION: 1 BLACK, 1 PURPLE, 1 BLUE, 1 GREEN, 1 YELLOW, AND 1 RED ALL EXITING A SEALED PIPE NIPPLE, 26" LONG.

VIEW OF CONDUIT BOX



DASH	C
517	9.68
580	10.31
623	10.74

NO.	REVISION	BY & DATE	CHK	TOLERANCES UNLESS SPECIFIED	
				DEC.	INCHES
3	ADDED VIEW OF COND BOX INSTALL ISAAC 12-5139	WGJ 03-05-2013	DD	.X	±.1
2	CHG. LEADS FROM 6" TO 26" CN39528	RWR 08/26/2005	ML	.XX	±.03
1	ADD UL/CSA AND MOTOR NAMEPLATES, CHANGED STUDS TO OVERBOLTS CN 46061	MJK 04/29/2005		.XXX	±.005
				.XXXX	±.0005
				ANG	±7'30"


REGAL-BELOIT CORPORATION

TITLE OUTLINE
48 FRAME - XP

MAT'L

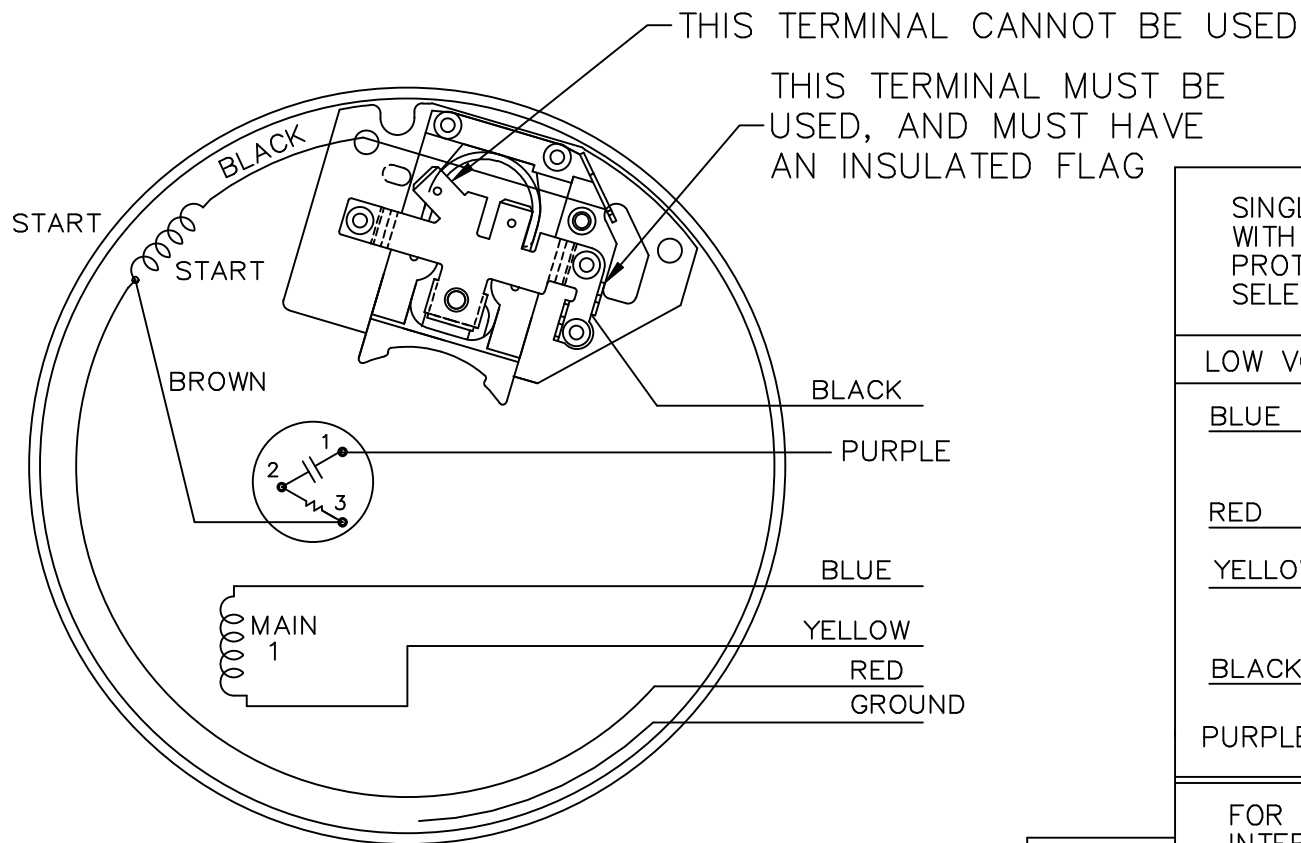
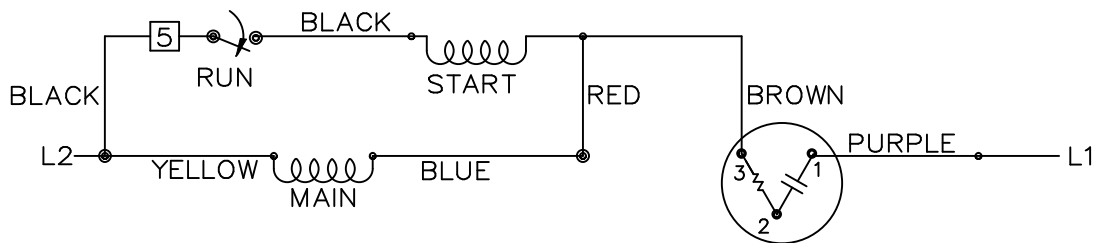
FINISH

DRAWN	RWR 03-15-2005
CHK	ML 03-18-2005
APPD	MJS 03-21-2005
SCALE	3=8
REF	A-SS403455
FMF	
PREV	

THIS DRAWING IN DESIGN AND DETAIL IS OUR PROPERTY AND MUST NOT BE USED EXCEPT IN CONNECTION WITH OUR WORK ALL RIGHTS OF DESIGN AND INVENTION ARE RESERVED THIS IS AN ELECTRONICALLY GENERATED DOCUMENT - DO NOT SCALE THIS PRINT

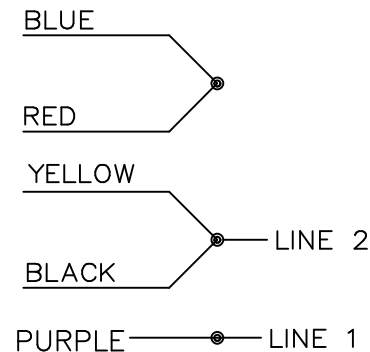
RFP	03-21-2005	CAD FILE	ss403455ge
DIST	WP		

SIZE	DRAWING NO.	PAGE 1 OF 1	REV.
A	SS403455GE		3



SINGLE VOLTAGE
WITH OVERLOAD
PROTECTION
SELECT ROTATION

LOW VOLT. CCW ROT.



FOR CW ROT.
INTERCHANGE BLUE
WITH YELLOW LEAD.

- A-S4CU1
- A-S6A4
- A-S4A2

		TOLERANCES UNLESS SPECIFIED		MARATHON ELECTRIC		DRAWN NB 03-14-2006	
		DEC.	INCHES			CHK	VL 03-14-2006
		.X	±.1	TITLE CONNECTION DIAGRAM		APPD	VL 03-14-2006
		.XX	±.02			SCALE	5=8
		.XXX	±.005			REF	EE7116K-GE
		.XXXX	±.0005			FMF	MU71130
NO.	REVISION	BY & DATE	CHK	ANG	FINISH	PREV	
			RFP	03-16-2006	CAD FILE EE7116K	SIZE	DRAWING NO. PAGE 1 OF 1 REV.
						A	EE7116K
						DIST	WP

THIS DRAWING IN DESIGN AND DETAIL IS OUR PROPERTY AND MUST NOT BE USED EXCEPT IN CONNECTION WITH OUR WORK ALL RIGHTS OF DESIGN AND INVENTION ARE RESERVED THIS IS AN ELECTRONICALLY GENERATED DOCUMENT - DO NOT SCALE THIS PRINT



CERTIFICATION DATA SHEET

P.O. BOX 8003
WAUSAU, WI 54401-8003
PH. 715-675-3311

CUSTOMER: REGAL BELIOT DE MEXICO
ORDER #: MU130306
CONN. DIAGRAM: A-EE7116K-GE

CUSTOMER PO#: 5KH35LNB164 A
MODEL #: CUSTOMER PART #:
MOUNTING: F1 ONLY

TYPICAL MOTOR PERFORMANCE DATA

HP	1/6	KW	0.13	SYNC RPM	1800	F.L. RPM	1725	FRAME	48	ENCLOSURE	EPNV	KVA CODE	T	DESIGN	NO DESIGN CODE		
PH	1	Hz	60	VOLTS	115	AMPS	3.3	START TYPE	ACROSS THE LINE	DUTY	CONTINUOUS	INSL	A	S.F.	1	AMB°C	40
FULL LOAD EFF:					62			3/4 LOAD EFF:	54		1/2 LOAD EFF:	46.6		GTD. EFF:	57.5	ELEC. TYPE	SPLIT PHASE
FULL LOAD PF:					63(0.63)			3/4 LOAD PF:	56		1/2 LOAD PF:	47.8					
F.L. TORQUE	24 LB-FT			LOCKED ROTOR AMPS	5.76			L.R. TORQUE	105.3 LB-FT		B.D. TORQUE	105.3 LB-FT		F.L. RISE°C	25		

*** SUPPLEMENTAL INFORMATION ***

DE BRACKET TYPE	STANDARD	ODE BRACKET TYPE	STANDARD	MOUNT TYPE	RIGID	ORIENTATION	HORIZONTAL	DUTY	FALSE	HAZARDOUS LOCATION	PHOTO-CL. GRD. CL. I/II GR/8/6	DRIP COVER	FALSE	SCREENS	GRAY - GE (POWDER)	PAINT	
BEARINGS	ODE BALL 6203	GREASE	POLYREX EM	SHAFT TYPE	T	SPECIAL DE	NONE	SPECIAL ODE	NONE	SHAFT MATERIAL	1144 STRESSPROOF (C-223)					ROLLED STEEL	CAST IRON

THERMOSTATS	NONE	PROTECTORS	AUTOMATIC	WDG RTDS	NONE	BRG RTDS	NONE	THERMISTORS	NONE	CONTROL	FALSE	SPACE HEATERS	NONE
-------------	------	------------	-----------	----------	------	----------	------	-------------	------	---------	-------	---------------	------

INVERTER TORQUE:	NONE
INV. HP SPEED RANGE:	NONE
ENCODER:	NONE
	NONE
	PPR
BRAKE:	NONE
	P/N NONE
	NONE
	NONE
	FT-LB
	NONE
	V
	NONE
	HZ

*



MARATHON ELECTRIC CORPORATION
TYPICAL PERFORMANCE CURVE for AC MOTOR

Customer

Curve at

460

Volts

HP 0.16

PHASE 1

Model No 5KH35LNB164

60

HZ

VOLTS 115

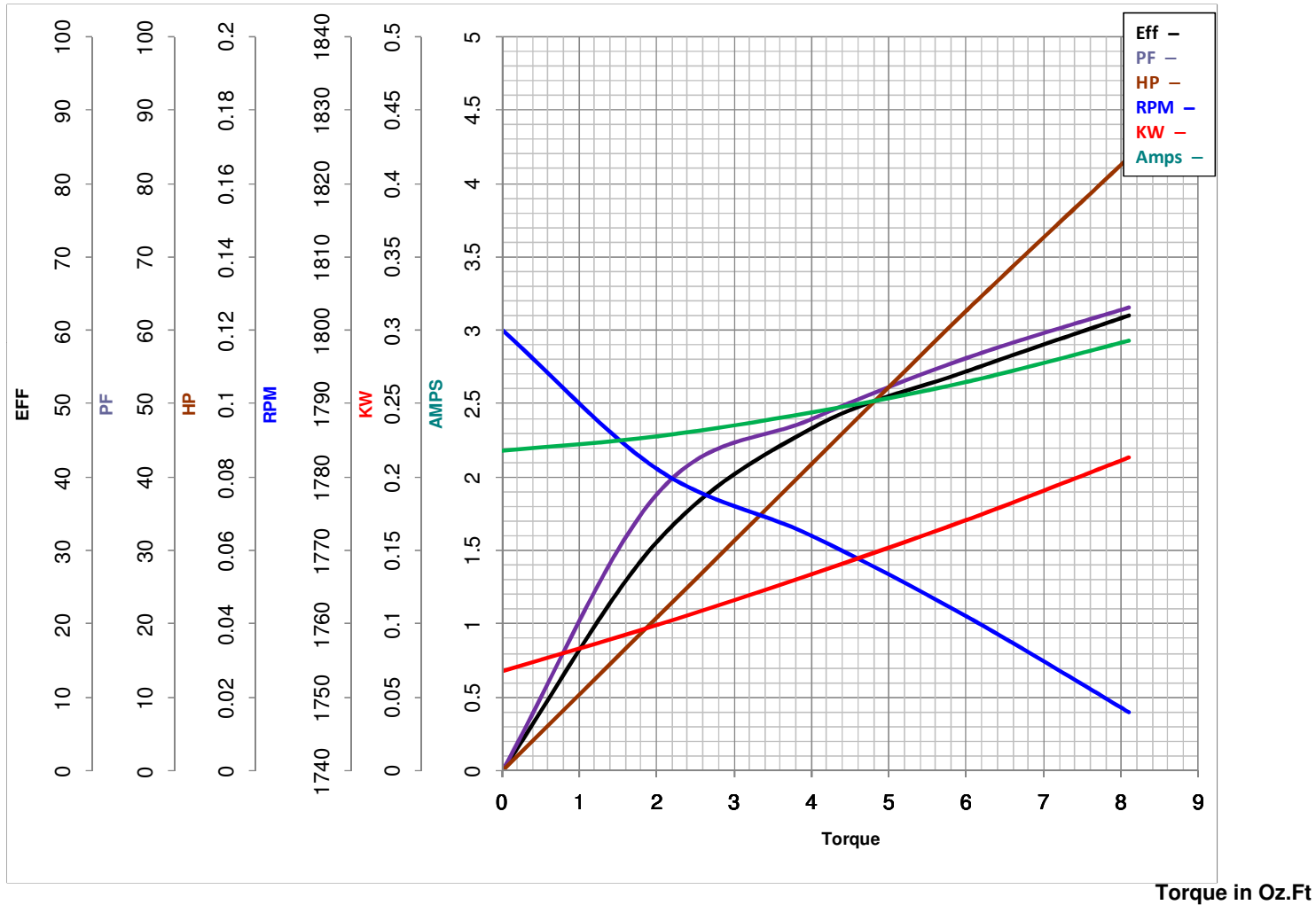
Catalog No HG456

0.16

HP

HZ 60

RPM 1725



FL TORQUE	<u>8.1</u>	Oz.Ft	FL AMPS	<u>3.3</u>	
BD TORQUE	<u>21.0</u>	Oz.Ft	PU TORQUE	<u>18.3</u>	Oz.Ft
LR TORQUE	<u>18.49</u>	Oz.Ft	LR AMPS	<u>28.2</u>	
WINDING	SE484371-		Date	3/8/2019	